



POLISH MID-CENTURY ICONS

FABRIC & WOOD COLLECTION

CATALOG 2017

Made with  in Poland

since 2014

## • Fabric Collections •

• <b>9 Collections</b> - 113 Colors .....	p. 03
• <b>Tweed</b> - Flat Woven Fabric .....	p. 04
• Collection - 8 Colors .....	p. 05
• Specification Card .....	p. 06
• <b>Loft</b> - Chenille Fabric .....	p. 07
• <b>Water Clean</b> Collection .....	p. 08
• Specification Card .....	p. 09
• <b>Denim</b> - Cotton Fabric .....	p. 10
• Collection - 10 Colors .....	p. 11
• Specification Card .....	p. 12
• <b>Cosy</b> - Chenille Fabric .....	p. 13
• <b>Water Clean</b> Collection - 18 Colors .....	p. 14
• Specification Card .....	p. 15
• <b>Velvet</b> - Velvet Fabric .....	p. 16
• <b>Water Clean</b> Collection - 20 Colors .....	p. 17
• Specification Card .....	p. 18
• <b>Shine Velvet</b> - Velvet Fabric .....	p. 19
• Collection - 16 Colors .....	p. 20
• Specification Card .....	p. 21
• <b>Chic</b> - Chenille Fabric .....	p. 22
• Collection - 20 Colors .....	p. 23
• Specification Card .....	p. 24
• <b>Wool</b> - Wool Fabric .....	p. 25
• Collection - 12 Colors .....	p. 26
• Specification Card .....	p. 27
• <b>Eco Leather</b> - Eco Leather Fabric .....	p. 28
• <b>Water Clean</b> Collection - 9 Colors .....	p. 29
• Specification Card .....	p. 30

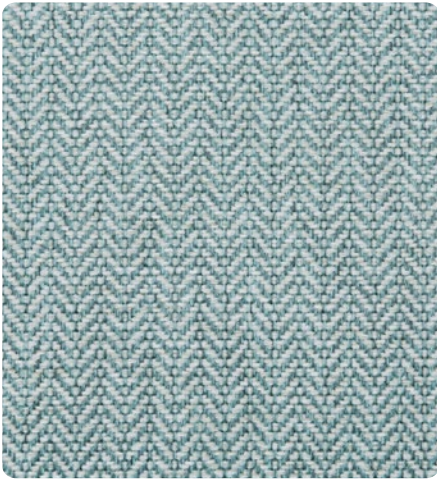
## • Fabrics & Wood •

• <b>Ash</b> Wood - 03 Ash .....	p. 31
• Ash Wood - 4 Colors .....	p. 32
• <b>Oak</b> Wood - 02 Oak .....	p. 33
• Oak Wood - 4 Colors .....	p. 34

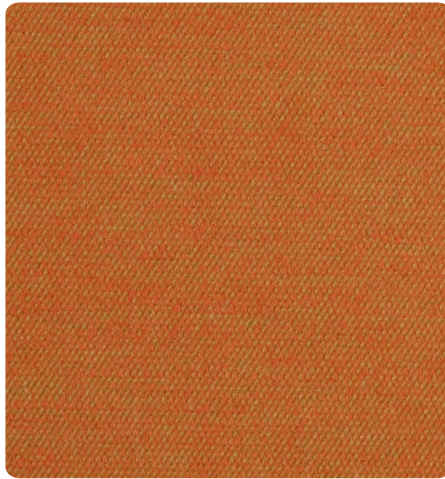
# Fabrics 9 Collections

113 colors

366  
Concept  
Retro Furniture



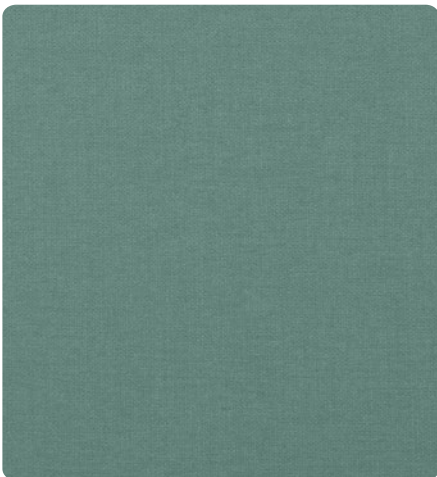
TWEED - 8 Colors



LOFT - 10 Colors  
Water Clean



DENIM - 10 Colors



COSY - 8 Colors  
Water Clean



VELVET - 20 Colors  
Water Clean



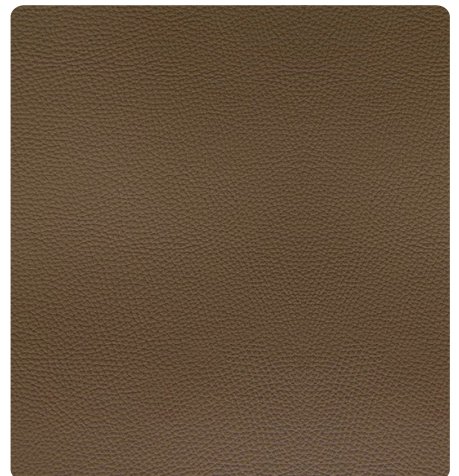
SHINE VELVET - 16 Colors



CHIC - 20 Colors



WOOL - 12 Colors



ECO LEATHER - 9 Colors  
Water Clean



# Tweed - Flat Woven Fabric

Fox Armchair - Mentos, Ash 03

366  
Concept  
Retro Furniture



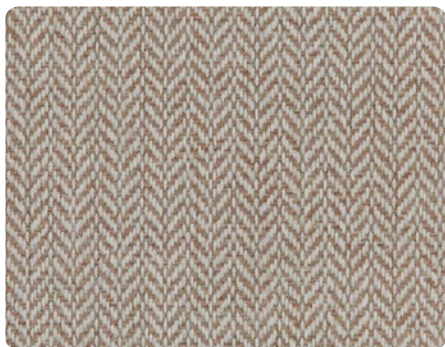
A classic **TWEED** with a modern twist. This Scottish woollen fabric was used to make jackets in the 1960s. Now the timeless herringbone pattern has returned in a range of trendy colours. We offer several shades of beige and grey, perfect for Scandinavian and loft interiors - with a retro touch.



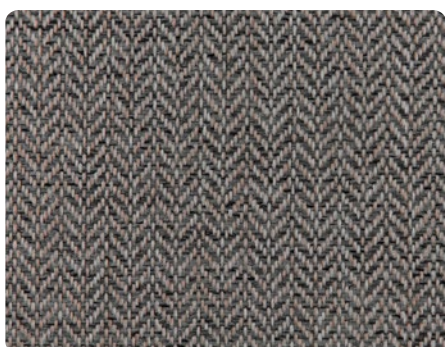
# Tweed Collection - 8 Colors

Flat Woven Fabric

366  
Concept  
Retro Furniture



TWEED - Beige



TWEED - Stone



TWEED - Mentos



TWEED - Aqua Green



TWEED - White



TWEED - Lemon



TWEED - Grey



TWEED - Black

• Type of fabric: flat woven fabric • Weight: 286 g/m<sup>2</sup> ± 10 g/m<sup>2</sup> • Seam Slippage: warp 3,4 mm, weft 3,4 mm • Composition: 100% PP • Width: 140 cm ± 2 cm  
• Martindale Abrasion: 25 000 • Tearing strength: warp >99 N / weft 66 N • Colour Fastness Test: dry 4 / wet 3/4 • Colour Fastness to Light: 5 • Pilling: 4/5

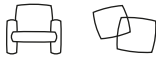

[www.366concept.com](http://www.366concept.com)

[hello@366concept.com](mailto:hello@366concept.com)

# Tweed Collection

## Specification Card

366  
Concept  
Retro Furniture

FABRIC TYPE	Flat Woven Fabric
COMPOSITION	100 % PP
WEIGHT	286 g/m <sup>2</sup> ± 10 g/m <sup>2</sup>
WIDTH	140 cm ± 2 cm
MARTINDALE ABRASION	20 000 cycles (category A)
SEAM SLIPPAGE	warp 3,4 mm / weft 3,4 mm
COLOR FASTNESS TEST	dry 4 / wet 3/4 (category B/A)
TEAR STRENGTH	warp 66 N / weft 99 N
TENSILE STRENGTH	warp 1097 N / weft 1024 N
COLOR FASTNESS TO LIGHT	6
PILLING	4/5
APPLICATIONS	
CLEANING	

- Certificate OEKO-TEX Standard 100 (IW 00070) tested by Instytut Włókiennictwa in Łódź.
- It's regard difference of tint commits among individual production parties.
- All information about our products and maintenance instructions you can find on our website: [www.366concept.com](http://www.366concept.com)

**TWEED** - classic tweed style is back with a modern twist. This timeless Scottish wool fabric was used to make jackets in the 1960s. The herringbone pattern marks a return to compositions that never went out of style. It is supplemented by colours that dominate current trends. We offer several shades of beige and grey, which will look perfect in Scandinavian and loft interiors. They even have a touch of retro.

Data in Technical Specification Card are mean values obtained during tests. The above-mentioned results are valid at the moment of publishing the catalog and later can be changed. The Valid Technical Specification Card can be always found on [www.366concept.com](http://www.366concept.com)



# Loft - Chenille Fabric

366 Junior Armchair - Mandarin & Mustard, Ash 03

366  
Concept  
Retro Furniture



The **LOFT** fabrics boast an incredible depth of colour and silky softness. Combining 2 colours of thread gives the fabric a multi-dimensional look and an appearance of depth, ideal for a loft or modern interior. The fabric's special stain-resistant coating makes it easy to clean.



# Loft Collection - 10 Colors

Chenille Fabric - Water Clean & Stain Resistant

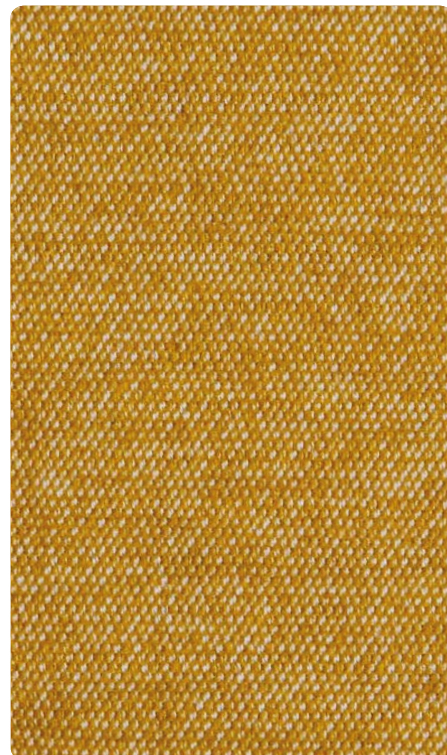
366  
Concept  
Retro Furniture



LOFT - White



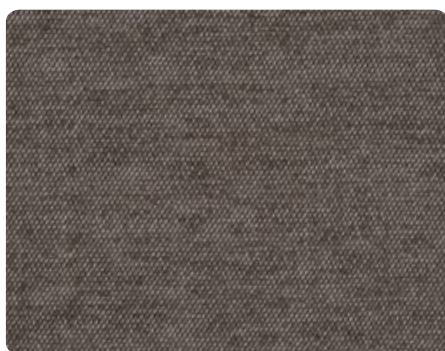
LOFT - Sand



LOFT - Mustard



LOFT - Silver



LOFT - Grey



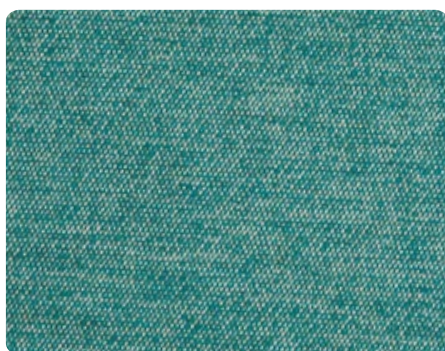
LOFT - Olive



LOFT - Mandarin



LOFT - Raspberry



LOFT - Turquoise



LOFT - Denim

• Type of fabric: chenille fabric • Weight: 429 g/m<sup>2</sup> ± 10 g/m<sup>2</sup> • Seam Slippage: warp 3,2 mm, weft 2,9 mm • Composition: 62.3% AC, 29.1% PES, 4.7% VI, 3.9% LN  
• Width: 140 cm ± 2 cm • Martindale Abrasion: 40 000 • Tearing strenght: warp >80 N / weft 51 N • Colour Fastness to Light: 5 • Pilling: 4/5  
• Color Fastness Test: dry 4 / wet 3/4 • Tensile Strenght: warp > 1606N / weft 152 • Other: water clean

# Loft Collection

## Specification Card

366  
Concept  
Retro Furniture

### FABRIC TYPE



Chenille Fabric

### COMPOSITION

62,3% AC, 29,1% PES, 4,7% VI, 3,9% LN

### WEIGHT

429 g/m<sup>2</sup> ± 10 g/m<sup>2</sup>

### WIDTH

140 cm ± 2 cm

### MARTINDALE ABRASION

40 000 cycles (category A)

### SEAM SLIPPAGE

warp 3,2 mm / weft 2.9 mm

### COLOR FASTNESS TEST

dry 4 / wet 3/4 (category B/A)

### TEAR STRENGTH

warp 80 N / weft 51 N

### TENSILE STRENGTH

warp 1606 N / weft 452 N

### COLOR FASTNESS TO LIGHT

5

### PILLING

4/5

### APPLICATIONS



### CLEANING



- Certificate OEKO-TEX Standard 100 (IW 00070) tested by Instytut Włókiennictwa in Łódź.
- It's regard difference of tint commits among individual production parties.
- All information about our products and maintenance instructions you can find on our website: [www.366concept.com](http://www.366concept.com)

**LOFT** - delight yourself with iridescent colours that ensure an amazing aesthetic experience. The incredible depth of colour and silky softness are the best things the LOFT fabric has going for it. 2 colours of thread, that look extraordinary when combined, are used to give the fabric a multi-dimensional look and an appearance of depth. These properties will help you to create an adorable loft or modernistic interior. The fabric has water clean film that makes it easier to clean.

Data in Technical Specification Card are mean values obtained during tests. The above-mentioned results are valid at the moment of publishing the catalog and later can be changed. The Valid Technical Specification Card can be always found on [www.366concept.com](http://www.366concept.com)



# Denim - Cotton Fabric

366 Armchair - Sunflower, Oak 02

366  
Concept  
Retro Furniture



The **DENIM** collection, with a texture reminiscent of frayed jeans, gives furniture a well-worn originality. The 85% cotton fabric is both breathable and durable. Its elasticity means that it keeps its shape and does not wrinkle. Burn-resistant it has passed the cigarette test - it is ideal for restaurants, clubs and hotels.



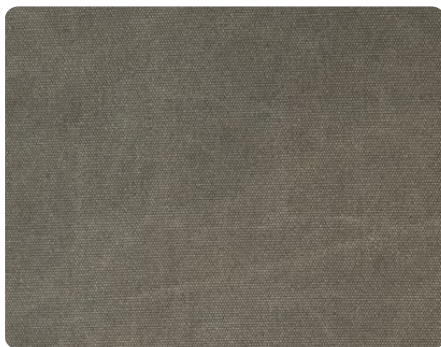
# Denim Collection - 10 Colors

Jeans Fabric

366  
Concept  
Retro Furniture



DENIM - Beige



DENIM - Olive



DENIM - Sunflower



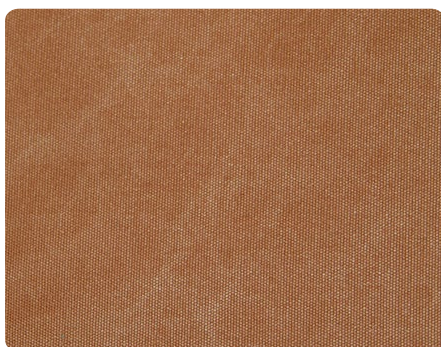
DENIM - Grey



DENIM - Dark Grey



DENIM - Jeans



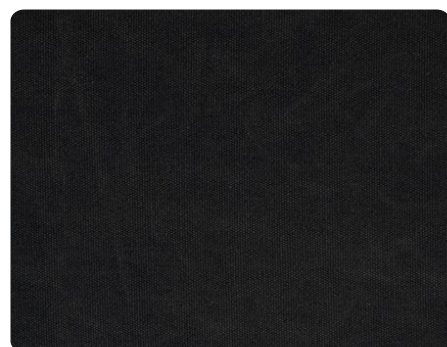
DENIM - Orange



DENIM - Rose



DENIM - Dark Jeans



DENIM - Carbon

• Type of fabric: frayed jeans • Weight:  $460 \text{ g/m}^2 \pm 10 \text{ g/m}^2$  • Seam Slippage: warp  $>200\%$  / weft  $>200\%$  • Composition: 85% CO, 15% PES Width:  $142 \text{ cm} \pm 2 \text{ cm}$  • Width:  $142 \text{ cm} \pm 2 \text{ cm}$  • Martindale Abrasion: 36 600 • Tearing strenght: warp  $> 52 \text{ N}$  / weft  $> 34 \text{ N}$  • Colour Fastness to rubbing: dry 4,5 / wet 4 • Pilling: 4 • Wet 4 Tensile strenght: warp  $840 \text{ N}$  / weft  $460 \text{ N}$  • Colour fastness to light: 4 • Cigarette test: passed

# Denim Collection

## Specification Card

366  
Concept  
Retro Furniture

FABRIC TYPE Cotton Fabric

COMPOSITION 85% CO, 15% PES

WEIGHT  $429 \text{ g/m}^2 \pm 10 \text{ g/m}^2$

WIDTH  $140 \text{ cm} \pm 2 \text{ cm}$

MARTINDALE ABRASION 36 000 cycles

COLOR FASTNESS TEST dry 4,5 / wet 4

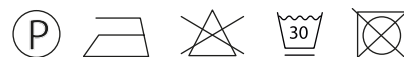
COLOR FASTNESS TO LIGHT 4

PILLING 4

APPLICATIONS



CLEANING



- Certificate OEKO-TEX Standard 100 (IW 00070) tested by Instytut Włókiennictwa in Łódź.
- It's regard difference of tint commits among individual production parties.
- All information about our products and maintenance instructions you can find on our website: [www.366concept.com](http://www.366concept.com)

DENIM collection add intriguing look to furniture, thanks to the texture reminiscent of frayed jeans. In their composition is 85% cotton, which makes them very breathable and durable. What's more they aren't wrinkling, while maintaining its dimensions and elasticity. Resistance to burn – passed the cigarette test – prove themselves perfectly fit in restaurants, clubs and hotels, giving them the appearance outside the box.

Data in Technical Specification Card are mean values obtained during tests. The above-mentioned results are valid at the moment of publishing the catalog and later can be changed. The Valid Technical Specification Card can be always found on [www.366concept.com](http://www.366concept.com)



# Cosy - Chenille Fabric

366 Armchair - Mint, Oak 02

366  
Concept  
Retro Furniture



The **COSY** collection, available in a stunning range of colours, has a soft, pleasant texture that offers unrivalled comfort. The special stain-resistant coating makes this fabric easy to clean; any dirt can be removed in seconds. This makes the cosy fabrics perfect for children's rooms, bedrooms and cosy living rooms.



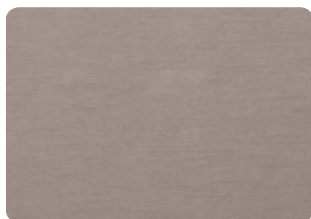
# Cosy Collection - 18 Colors

Chenille Fabric - Water Clean, Stain Resistant

366  
Concept  
Retro Furniture



COSY - Sand



COSY - Beige



COSY - Taupe



COSY - Light Grey



COSY - Grey



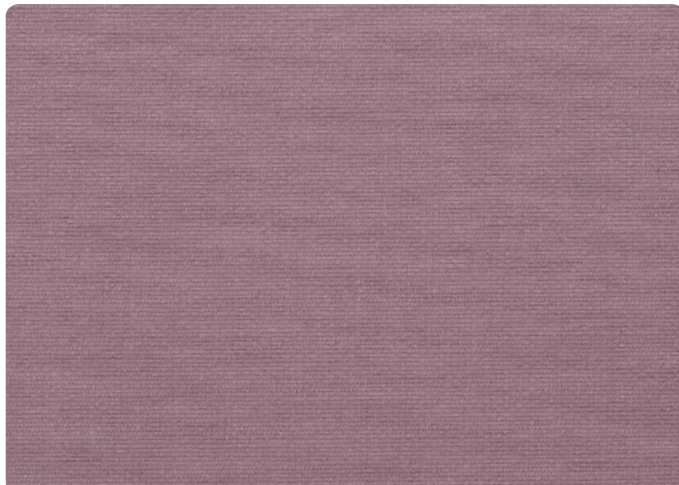
COSY - Graphite



COSY - Mint



COSY - Lemonade



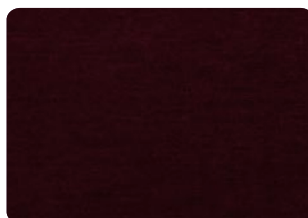
COSY - Powder Pink



COSY - Coral



COSY - Fuschia



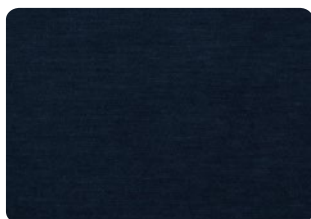
COSY - Aubergine



COSY - Sun



COSY - Curry



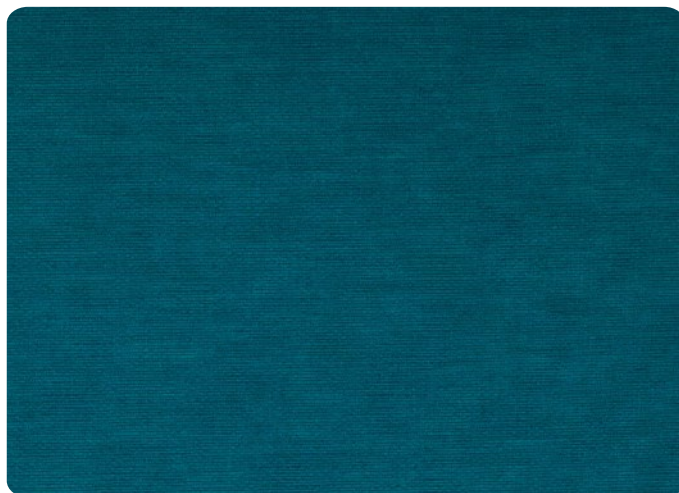
COSY - Dark Blue



COSY - Ocean



COSY - Black



COSY - Turquoise

- Type of fabric: chenille fabric • Weight: 403 g/m<sup>2</sup> ± 10 g/m<sup>2</sup> • Seam Slippage: warp 4,1 mm / weft 3,3 mm • Composition: 100% PES • Width: 140 cm ± 2 cm
- Martindale Abrasion: 100 000 • Tearing strenght: warp > 193 N / weft > 99 N • Colour fastness to light: 5/6 • Pilling: 4/5 • Colour Fastness Test: dry 4 / wet 3/4
- Fastness to Rubbing: Wet: 3/4 (category B/A) Dry: 4 • Tensile Strenght: warp > 1966 N / weft 99 N

# Cosy Collection

## Specification Card

366  
Concept  
Retro Furniture

### FABRIC TYPE



Chenille Fabric

### COMPOSITION

100 % PES

### WEIGHT

403 g/m<sup>2</sup> ± 10 g/m<sup>2</sup>

### WIDTH

140 cm ± 2 cm

### MARTINDALE ABRASION

> 100 000 cycles (category A)

### SEAM SLIPPAGE

warp 4,1 mm / weft 3,3 mm

### COLOR FASTNESS TEST

dry 4 / wet 3/4 (category B/A)

### TEAR STRENGTH

warp > 193 N / weft > 99 N

### TENSILE STRENGTH

warp > 1966 N / weft > 1100 N

### COLOR FASTNESS TO LIGHT

5/6

### PILLING

4/5

### APPLICATIONS



### CLEANING



- Certificate OEKO-TEX Standard 100 (IW 00070) tested by Instytut Włókiennictwa in Łódź.
- It's regard difference of tint commits among individual production parties.
- All information about our products and maintenance instructions you can find on our website: [www.366concept.com](http://www.366concept.com)

**COSY** - let yourself admire the incredible palette of colours included in the **COSY** collection. These fabrics have a soft, pleasant to the touch texture that will delight any comfort lover. What's more, they are very easy to clean thanks to a special Teflon coating that makes any dirt removed in a few moments. **COSY** collection ideally suited to the children's room, bedroom and cosy lounge. The fabric has water clean film that makes it easier to clean.

Data in Technical Specification Card are mean values obtained during tests. The above-mentioned results are valid at the moment of publishing the catalog and later can be changed. The Valid Technical Specification Card can be always found on [www.366concept.com](http://www.366concept.com)

# Velvet - Velvet Fabric

366 Armchair - Sky Blue, Ash 03

366  
Concept  
Retro Furniture



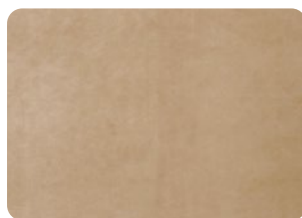
The **VELVET** collection is synonymous with luxury and elegance. Velvet has delighted since its arrival in Europe, providing a royal feel. This extremely tactile fabric, available in a soft colour palette that plays with the light, fits a broad range of interiors, adding a touch of glamour to any home. The fabric's special stain resistant coating makes it easy to clean.



# Velvet Collection - 20 Colors

Velvet Fabric - Water Clean & Stain Resistant

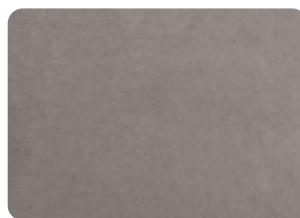
366  
Concept  
Retro Furniture



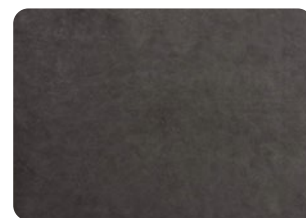
VELVET- Sand



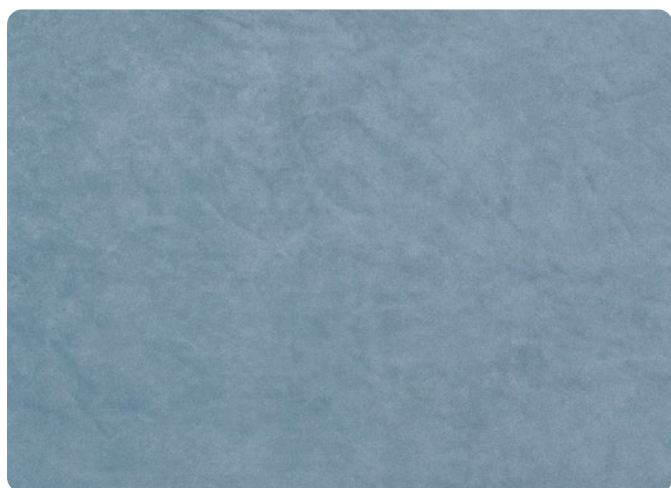
VELVET- Taupe



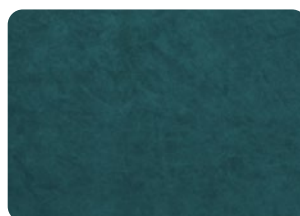
VELVET - Mouse Grey



VELVET - Graphite



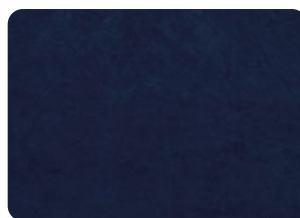
VELVET - Sky Blue



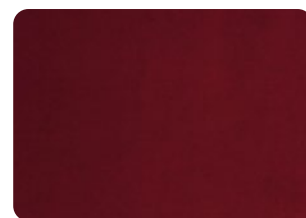
VELVET - Ocean



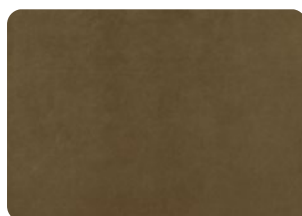
VELVET - Turquoise



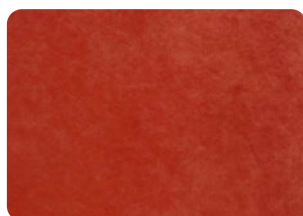
VELVET - Indigo



VELVET - Merlot



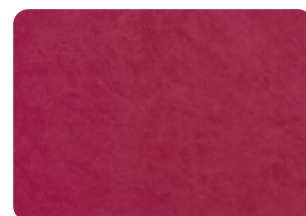
VELVET - Khaki



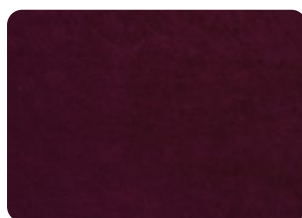
VELVET - Chilli Pepper



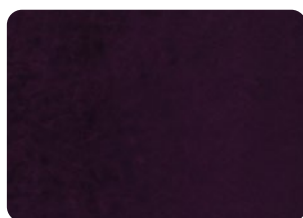
VELVET - Powder Pink



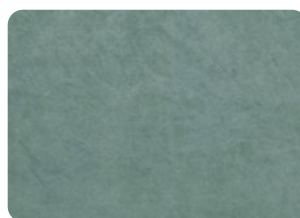
VELVET - Pink



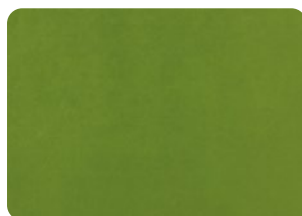
VELVET - Aubergine



VELVET - Purple



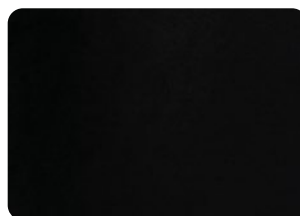
VELVET - Mint



VELVET - Light Green



VELVET - Bottle Green



VELVET - Black



VELVET - Lemonade

- Type of fabric: velvet • Weight: 483 g/m<sup>2</sup> ± 10g/m<sup>2</sup> • Seam Slippage: warp 2,5mm / weft 3,1mm • Composition: 100% PES • Width: 140 cm ± 2 cm
- Martindale Abrasion: 47 000 • Tear Strenght: warp > 58N / weft 37N • Color Fastness to Light: 4/5 • Color Fastness Test: dry 4 / wet 3/4
- Tensile Strenght: warp1040N / weft1134N • Pilling: 4/5 • Other: water clean

# Velvet Collection

## Specification Card

366  
Concept  
Retro Furniture

### FABRIC TYPE



Velvet Fabric

### COMPOSITION

100 % PES

### WEIGHT

483 g/m<sup>2</sup> ± 10 g/m<sup>2</sup>

### WIDTH

140 cm ± 2 cm

### MARTINDALE ABRASION

47 000 cycles (category A)

### SEAM SLIPPAGE

warp 2,5 mm / weft 3,1 mm

### COLOR FASTNESS TEST

dry 4 / wet 3/4 (category B/A)

### TEAR STRENGTH

warp 58 N / weft 37 N

### TENSILE STRENGTH

warp > 1040 N / weft 1134 N

### COLOR FASTNESS TO LIGHT

4/5

### PILLING

4/5

### APPLICATIONS



### CLEANING



- Certificate OEKO-TEX Standard 100 (IW 00070) tested by Instytut Włókiennictwa in Łódź.
- It's regard difference of tint commits among individual production parties.
- All information about our products and maintenance instructions you can find on our website: [www.366concept.com](http://www.366concept.com)

**VELVET** - a synonym for luxury and elegance – a royal fabric. From the moment it arrived in Europe, it has delighted with its noble texture, and has won the acclaim of rulers and dignitaries. Its majesty, and its filmy surface, which plays with the light, stop you from being indifferent to it, and its soft colour range perfectly integrates with diverse styles of interior. Avail yourself of the glamour of this extremely tactile fabric for an arrangement in your own home. The fabric has an water clean film that makes it easy to clean.

Data in Technical Specification Card are mean values obtained during tests. The above-mentioned results are valid at the moment of publishing the catalog and later can be changed. The Valid Technical Specification Card can be always found on [www.366concept.com](http://www.366concept.com)



# Shine Velvet - Velvet Fabric

Fox Armchair - Mustard, Ash 03

366  
Concept  
Retro Furniture

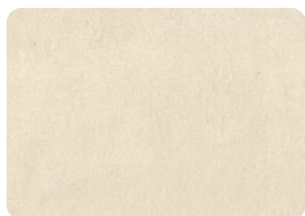


The **SHINE VELVET** collection is synonymous with luxury and elegance. Velvet has delighted since its arrival in Europe, providing a royal feel. This extremely tactile fabric, available in a soft colour palette that plays with the light, fits a broad range of interiors, adding a touch of glamour to any home.

# Shine Velvet Collection - 16 Colors

Velvet Fabric

366  
Concept  
Retro Furniture



SHINE VELVET  
Snow



SHINE VELVET  
Beige



SHINE VELVET  
Light Taupe



SHINE VELVET  
Taupe



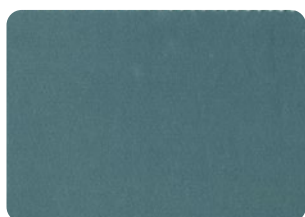
SHINE VELVET  
Light Grey



SHINE VELVET  
Mouse Grey



SHINE VELVET  
Ocean



SHINE VELVET  
Tourquoise



SHINE VELVET  
Blue



SHINE VELVET  
Indigo



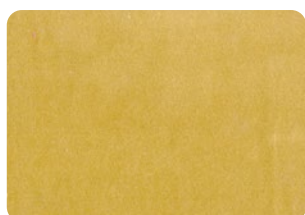
SHINE VELVET  
Magenta



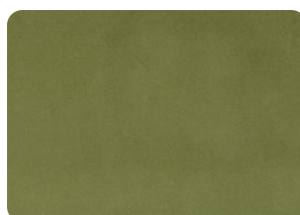
SHINE VELVET  
Bordeaux



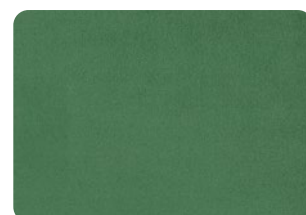
SHINE VELVET  
Lavender



SHINE VELVET  
Mustard



SHINE VELVET  
Green



SHINE VELVET  
Bottle Green

• Type of fabric: velvet • Weight: 330 g/m<sup>2</sup> ± 10 g/m<sup>2</sup> • Composition: 100% PES • Width: 140 cm ± 2cm • Martindale Abrasion: 115 000 cycles  
• Color Fastness to Light: 5 • Pilling: 4-5 • Color Fastness Test: dry 4-5 / wet 4-5



# Shine Velvet Collection

## Specification Card

366  
Concept  
Retro Furniture

FABRIC TYPE	Velvet Fabric
COMPOSITION	100% PES
WEIGHT	330 g/m <sup>2</sup> ± 5%
WIDTH	140 cm ± 2 cm
MARTINDALE ABRASION	115 000 cycles
COLOR FASTNESS TEST	dry 4,5 / wet 4/5
COLOR FASTNESS TO LIGHT	5
PILLING	4/5
APPLICATIONS	
CLEANING	    

- Certificate OEKO-TEX Standard 100 (IW 00070) tested by Instytut Włókiennictwa in Łódź.
- It's regard difference of tint commits among individual production parties.
- All information about our products and maintenance instructions you can find on our website: [www.366concept.com](http://www.366concept.com)

**SHINE VELVET** - a synonym for luxury and elegance - a royal fabric. From the moment it arrived in Europe, it has delighted with its noble texture, and has won the acclaim of rulers and dignitaries. Many years have gone by, but the fabric has lost none of its exceptionality. Its majesty, and its filmy surface, which plays with the light, stop you from being indifferent to it, and its soft colour range perfectly integrates with diverse styles of interior. Avail yourself of the glamour of this extremely tactile fabric for an arrangement in your own home.

Data in Technical Specification Card are mean values obtained during tests. The above-mentioned results are valid at the moment of publishing the catalog and later can be changed. The Valid Technical Specification Card can be always found on [www.366concept.com](http://www.366concept.com)

# Chic - Chenille Fabric

Cushions Rectangle M - Coral, Mint & Citron

366  
Concept  
Retro Furniture



**CHIC** - the houndstooth (French pied-de-poule) pattern has a long tradition, dating back to the woollen blankets of medieval Scotland. Used for elegant jackets in the 19th Century, it became extraordinarily popular in the 1920s. This Italian fabric is made from patented polyolefin fibres, making it suitable for indoor and outdoor use. Light but durable, it is resistant to stains from food, sunlight and moisture. It can be washed at 30°C in a small amount of detergent.



# Chic Collection - 20 Colors

Chenille Fabric - Stain Resistant

366  
Concept  
Retro Furniture



CHIC - Beige



CHIC - Beige Side



CHIC - Mustard



CHIC - Mustard Side



CHIC - Mare Side



CHIC - Mare



CHIC - Mint Side



CHIC - Mint



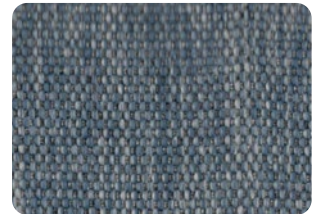
CHIC - Sea Blue



CHIC - Sea Blue Side



CHIC - Jeans



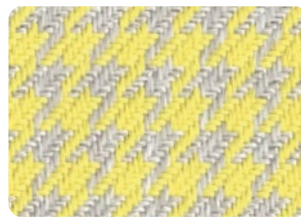
CHIC - Jeans Side



CHIC - Orange & Grey



CHIC - Orange & Grey Side



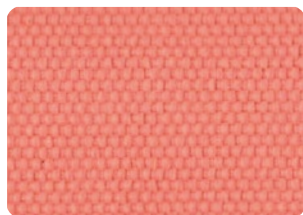
CHIC - Citron



CHIC - Citron Side



CHIC - Coral



CHIC - Coral Side



CHIC - Black & White



CHIC - Black & White Side

• Type of fabric: chic • Weight: 490±5% • Composition: 100% PP • Width: 140 cm • Martindale Abrasion: >40 000 • Color Fastness to Light: 4/5  
• Pilling: 5 • Color Fastness Test: dry 5 / wet 5

# Chic Collection

## Specification Card

366  
Concept  
Retro Furniture

### FABRIC TYPE



Chenille Fabric

### COMPOSITION

100% PP

### WEIGHT

490 g/m<sup>2</sup> ± 5%

### WIDTH

140 cm

### MARTINDALE ABRASION

40 000 cycles

### COLOR FASTNESS TEST

dry 4 / wet 5

### COLOR FASTNESS TO LIGHT

4/5

### PILLING

5

### APPLICATIONS



### CLEANING



- Certificate OEKO-TEX Standard 100 (IW 00070) tested by Instytut Włókiennictwa in Łódź.
- It's regard difference of tint commits among individual production parties.
- All information about our products and maintenance instructions you can find on our website: [www.366concept.com](http://www.366concept.com)

**CHIC** - the characteristic houndstooth (fr. pied-de-poule) pattern has a very long tradition. It first appeared on woollen blankets in Medieval Scotland. During the 19th century, it was used to decorate the jackets of the upper classes. There are two fabric types of this collection available - one color and with the houndstooth (fr. pied-de-poule).

Data in Technical Specification Card are mean values obtained during tests. The above-mentioned results are valid at the moment of publishing the catalog and later can be changed. The Valid Technical Specification Card can be always found on [www.366concept.com](http://www.366concept.com)



# Wool - Wool Fabric

366 Armchair - Mustard, Ash 03

366  
Concept  
Retro Furniture



The **WOOL** collection uses new-generation fabrics made from natural materials. Weaving long, smooth wild flax fibre between the wool creates an eye-catching two-tone colour inspired by precious stones. The addition of flax makes WOOL fabrics less flammable, which means that they are ideal for commercial interiors, such as hotels or restaurants.



# Wool Collection - 12 Colors

Wollen Fabric

366  
Concept  
Retro Furniture



WOOL - Sand



WOOL - White Blue



WOOL - Grey Blue



WOOL - Light Mustard



WOOL - Mustard



WOOL - Beige



WOOL - Olive



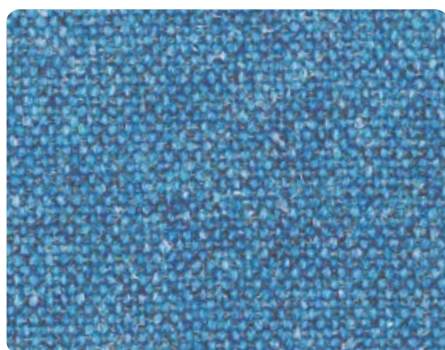
WOOL - Bottle Green



WOOL - Turquoise



WOOL - Blue



WOOL - Jeans



WOOL - Grey Black

• Type of fabric: woollen fabric • Weight: 435 g/m<sup>2</sup> ± 5% (610g/lin.m ± 5%) • Composition: 70% Virgin Wool 30 Flax • Width: 140 cm • Martindale Abrasion: 35000  
• Colour fastness to light: 5 (ISO 105 - B02) • Pilling: 4/5 • Fastness to Rubbing: Wet: 3, Dry: 4 (ISO 105 - X12) • Cleaning: Vacuum regularly  
• Professionally dry clean or wipe clean with a damp cloth • Cigarette test: passed



# Wool Collection

## Specification Card

366  
Concept  
Retro Furniture

FABRIC TYPE	Wool Fabric
COMPOSITION	70% Wool, 30% Flax
WEIGHT	405 g/m <sup>2</sup> ± 5% (610g/lin.m ± 5%)
WIDTH	>= 140 cm
MARTINDALE ABRASION	>= 50 000 cycles
SEAM SLIPPAGE	< 8mm
COLOR FASTNESS TEST	dry 4 / wet 3
TEAR STRENGTH	warp > 25 N / weft > 25 N
TENSILE STRENGTH	warp > 400 N / weft > 400 N
COLOR FASTNESS TO LIGHT	5
PILLING	4/5
APPLICATIONS	
CLEANING	

- Certificate OEKO-TEX Standard 100 (IW 00070) tested by Instytut Włókiennictwa in Łódź.
- It's regard difference of tint commits among individual production parties.
- All information about our products and maintenance instructions you can find on our website: [www.366concept.com](http://www.366concept.com)

**WOOL** - collection is a new generation of durable fabrics created from natural materials. Thanks to woven, long and smooth wild flax fibers between wool fabric created an interesting two-tone colour inspired by precious stones. The addition of flax also make **WOOL** fabrics characterized by a reduced flammability – so prove themselves perfectly in the interiors of commercial interest such as hotels or restaurants.

Data in Technical Specification Card are mean values obtained during tests. The above-mentioned results are valid at the moment of publishing the catalog and later can be changed. The Valid Technical Specification Card can be always found on [www.366concept.com](http://www.366concept.com)

# Eco Leather - Eco Leather Fabric

366 Metal Series Armchair - Black, Ash 02

366  
Concept  
Retro Furniture



**ECO LEATHER** - Perfectly imitates Natural Leather – The imprinted material texture perfectly captures its look. Eco Leather fabric is as soft and delicate as natural material but it is distinguished by better usable attributes – it is more heavy-duty and more abrasion resistant, it does not get dark after contact with water.

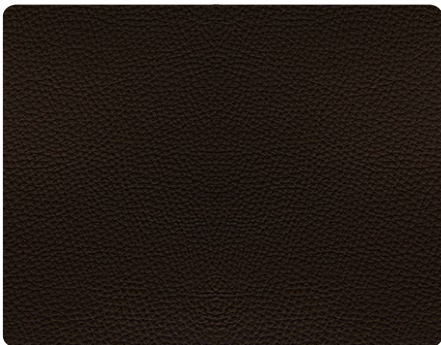
# Eco Leather Collection - 9 Colors

Water Block & Water Clean

366  
Concept  
Retro Furniture



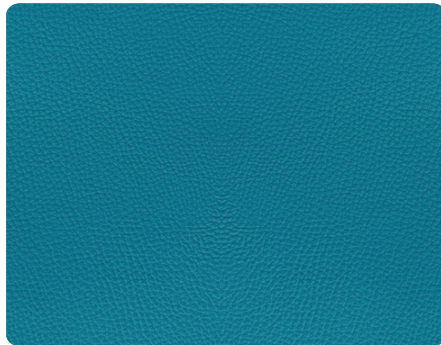
ECO LEATHER - Taupe



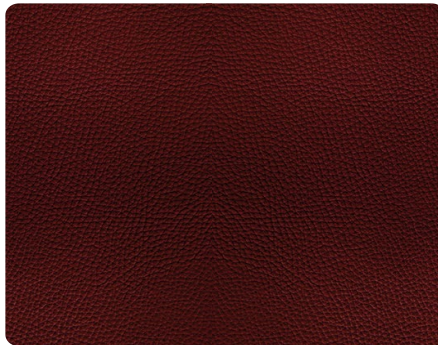
ECO LEATHER - Dark Chocolate



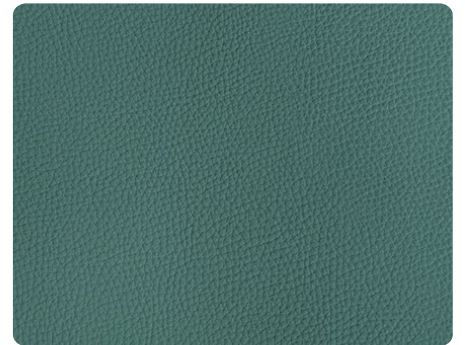
ECO LEATHER - Chocolate



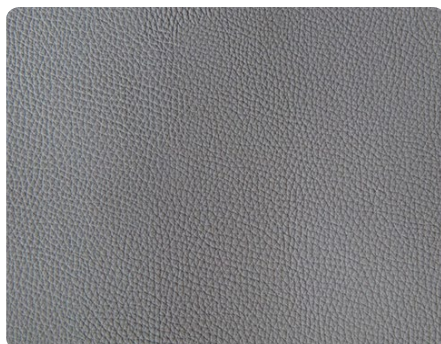
ECO LEATHER - Turquoise



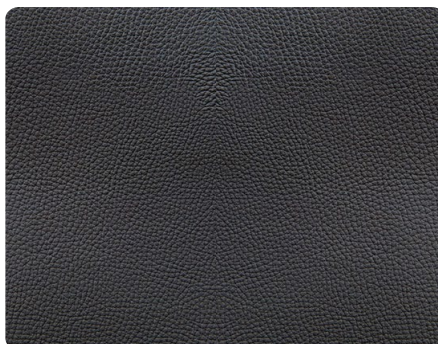
ECO LEATHER - Bordo



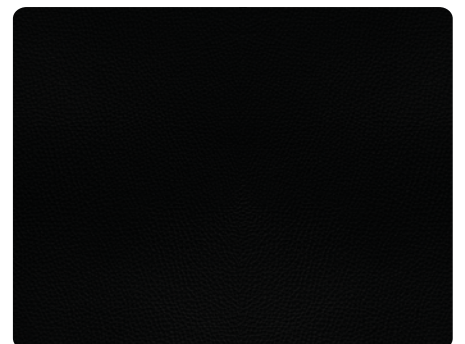
ECO LEATHER - Mint



ECO LEATHER - Mouse Grey



ECO LEATHER - Graphite



ECO LEATHER - Black

- Type of fabric: eco leather • Weight: 480 gr/m<sup>2</sup> • Composition: 60% PU, 30% PES, 10% CO • Width: 140 cm ± 2 cm • Martindale Abrasion: >50.000
- Colour fastness to light: 4 (ISO 105 - B02) • Fastness to Rubbing: Wet: 4-5, Dry: 4-5 (ISO 105 - X12)



# Eco Leather Collection

## Specification Card

366  
Concept  
Retro Furniture



WATER  
CLEAN

Eco Leather Fabric

### FABRIC TYPE

### COMPOSITION

60% PU, 30% PES, 10% CO

### WEIGHT

480 g/m<sup>2</sup>

### WIDTH

140 cm ± 2cm

### MARTINDALE ABRASION

50 000 cycles

### COLOR FASTNESS TO RUBBING

dry 4/5 / wet 4/5

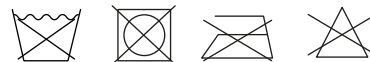
### COLOR FASTNESS TO LIGHT

4

### APPLICATIONS



### CLEANING



- Certificate OEKO-TEX Standard 100 (IW 00070) tested by Instytut Włókiennictwa in Łódź.
- It's regard difference of tint commits among individual production parties.
- All information about our products and maintenance instructions you can find on our website: [www.366concept.com](http://www.366concept.com)

**ECO LEATHER** - Perfectly imitates Natural Leather – The imprinted material texture perfectly captures its look. Eco Leather fabric is as soft and delicate as natural material but it is distinguished by better usable attributes – it is more Heavy-Duty and more abrasion resistant, it does not get dark after contact with water.

Data in Technical Specification Card are mean values obtained during tests. The above-mentioned results are valid at the moment of publishing the catalog and later can be changed. The Valid Technical Specification Card can be always found on [www.366concept.com](http://www.366concept.com)

# Wood Collection - Ash

Fox Footstool - Velvet - Bottle Green, Ash 03

366  
Concept  
Retro Furniture



**ASH** - Our furniture is made of solid wood. Available in 4 colours, it is coated with ecological matt water-based varnish. The wood, from trusted, ecologically certified suppliers, is seasoned for at least seven years before use, guaranteeing durability. The wood is hand-selected by a specialist to ensure that all the parts match the frame.

# Ash Wood Collection - 4 Colors

Hand - Selected Solid Wood

366  
Concept  
Retro Furniture



ASH - 01



ASH - 02



ASH - 03



ASH - 04



# Wood Collection - Oak

366 Armchair - Cosy - Mint, Oak 02

366  
Concept  
Retro Furniture



**OAK** - Our furniture is made of solid wood. Available in 4 colours, it is coated with ecological matt water- based varnish. The wood, from trusted, ecologically certified suppliers, is seasoned for at least seven years before use, guaranteeing durability. The wood is hand-selected by a specialist to ensure that all the parts match the frame.

# Oak Wood Collection - 4 Colors

Hand - Selected Solid Wood

366  
Concept  
Retro Furniture



OAK - 01



OAK - 02



OAK - 03



OAK - 04